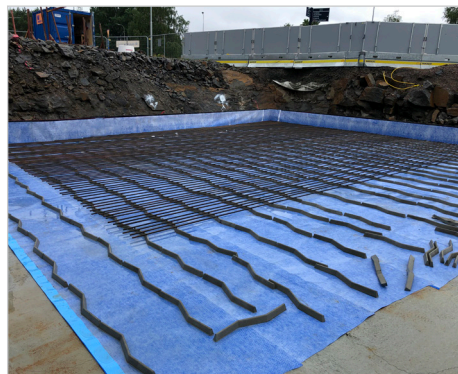


TECHNICAL DATA SHEET - HYDRA® FLEECE MEMBRANE

Hydra® Fleece Membrane is a high-quality membrane with a robust LDPE-foil for water proofing and radon protection.

Complete adhesion of the membrane happens through the chemically treated fleece fibers.

When the concrete is cast against the Hydra® Fleece Membrane, the chemically treated fleece ensures a mechanical bond between concrete and membrane, so that the membrane becomes completely integral with the concrete ("dual bond").



Work temperature between -10 and +40 degrees



Radon protection



Flexible



DS/EN 13967



UV-resistant

ADVANTAGES

- ✓ Dual-bond effect
- ✓ Non weather dependent application
- ✓ Easy and flexible application
- ✓ Can be used as radon protection

APPLICATION

- Hydra® Fleece Membrane can be used as water proofing on all types of concrete constructions with water pressure up to 20m.
- The membrane is weather resistant and can be applied in all weather conditions (work temperature +10 to +40° C.)
- The membrane also functions as a radon protection according to SBI-regulation 233.

INSTALLATION

See the installation guide for Fleece membranes

ACCESSORIES

- Polyfleece tape, 75mm L=20m
- HyDra® Swelling Paste SX100
- 2K Sealing Adhesive SX1

Note: We reserve the right to make printing errors. The current version of data is always available at www.haucon.dk or can be requested by contacting our internal sales department. The current revision number is in the top left corner

TECHNICAL SPECIFICATIONS

Colour	White/blue
Environment	Free of solvents, isocyanates, PVC, phthalate, and silicone
Thickness	1,21 mm
Thickness of LDPE foil	> 0,8 mm
Weight	730 g/m ²
Watertightness acc. to DS/EN 1928	
Approved for:	Water pressure: 2,0 bar
Tested for:	Water pressure: 5,0 bar
Tensile strength acc. to DS/EN 12311-2:	Lengthwise ≥ 250 N/50mm Across ≥ 200 N/50mm
Elongation at break acc. to DIN EN 12311-2:	Lengthwise ≥ 20 % Across ≥ 50 %
Joint strength acc. to DIN EN 12317-2	Glued seam: ≥ 100 N/50mm
Resistance to tearing (nail shank) acc. to DIN EN 12310-1:	Lengthwise ≥ 150 N Across ≥ 150 N
Adhesion to concrete:	> 0,55 N/mm ²
Resistance to temperature:	- 40°C / +100°C

PACKAGING AND STORAGE

Size:

- 1x20 m
- 2x20 m

Hydra® Fleece Membrane should be stored dryly and in unopened original packaging at temperature between +5°C and +25°C.

SAFETY DATASHEET

There are no requirements for a safety datasheet for this product since it is not classified according to the CLP-regulation 1272/2008.

CE MARKING

The product is subject to Construction Products Regulation No. 305-2011 and is CE marked according to DS/EN 13967

