

TECHINCAL DATA SHEET - BETON STQ3+

DESCRIPTION

Concrete spacers made in a mix design specially developed for civil construction in aggressive and extra aggressive environment.

The specified exposure classes may vary from each project, therefore the used mix design should be evaluated by the customer from the table below.

The concrete spacer has three different concrete covers for both horizontal and vertical reinforcement.

The spacers can be delivered with or without a cast in 1,2 mm stainless steel tire wire.

The spacers are produced after our own quality plan that can be requested by contacting our technical department on ta@haucon.dk

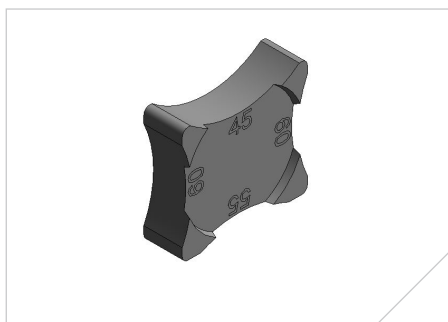


MIX DESIGN

Demands according to appendix F DS 2426 – EN 206-1 Extra aggressive environment

Cement	CEM I 52,5R	Strength [MPa]	> 50
		kg/m ³	> 150
V/C ratio		V/(C+2SF+0,4FA)	< 0,40
Concrete strength	DS/EN 12390-3+AC:2012	Strength [MPa]	28 _{døgn} > 50
Micro silica (SF)		% of binder	≤ 5,0
Flyash (FA)		% of binder	10 – 25
Frost-freeze	DS/CEN/TS 12390-9 (2006)	Flaking [kg/m ²]	m112 = 0,17
Chloride migration	NT BUILD 492:1999	Migration [m ² /s]	< 2,0*10 ⁻¹²
Petographic analysis	DS 423.41-44:2002	Internal stability	Perfect
		Homogeneity	Perfect
		Pasta cracks and binder capability	No cracks
Airvoids structure	EN 480-11: 2005	Air content [vol. %]	> 4,5
		Distance factor [mm]	< 0,20

GEOMETRY



Item no. Description

1132150 Beton StQ3+ 45/55/60 u/tråd

1132155 Beton StQ3+ 45/55/60 m/rustfritråd

Please note:

The above items are in stock.

Other designs of concrete spacers can be produced in mix design StQ3+ with an estimated production time of 4 weeks.

ENVIRONMENTAL CLASS

X0, XC1, XC2, XC3, XC4, XA1, XD1, XS1, XS2, XF2, XF3 XA2, XD2, XD3, XS3, XF4

CE-MARKING

Concrete spacers are not subject to a harmonized standard and therefore does not have to be CE marked according to Construction Products Regulation No. 305-2011.

Note: We reserve the right to make printing errors. The current version of data is always available at www.haucon.dk or can be requested by contacting our internal sales department. The current revision number is in the top left corner.